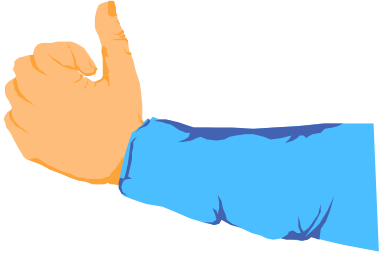
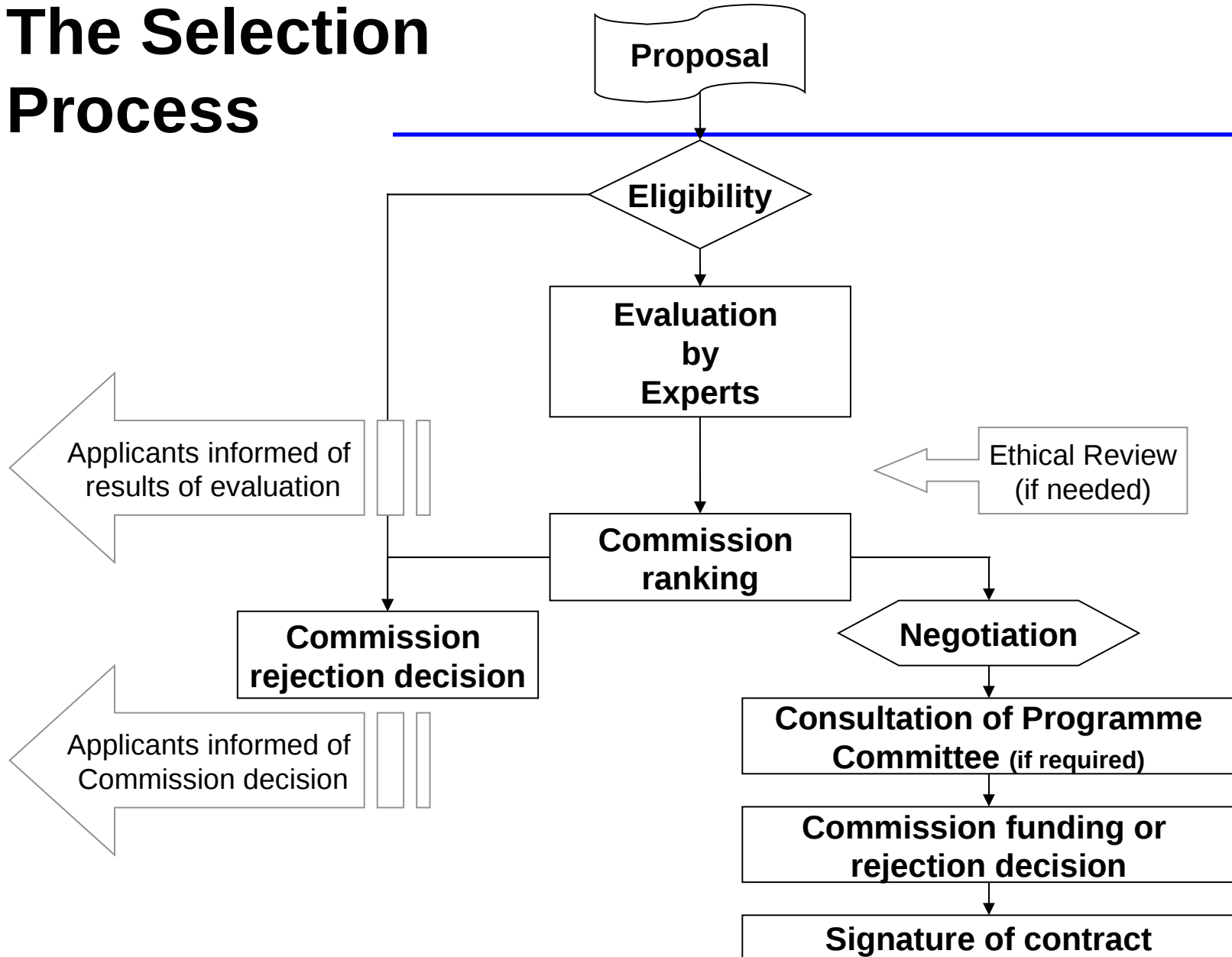


Framework Programme 7

Evaluation

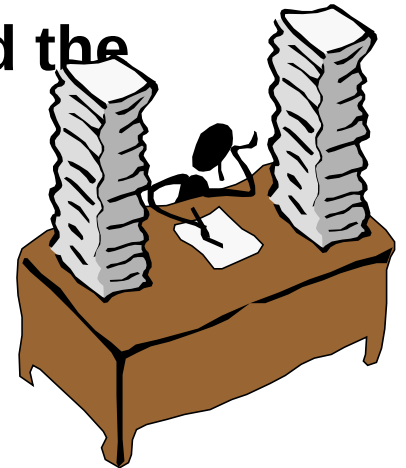


The Selection Process



How does it work? II

- Under control of European Commission
- Evaluation by independent experts (3 evaluators evaluate each proposal)
- Evaluators work on line and meet for the consensus phase
- Publication of the results (marks and comments)
- Hearings (for new instruments)
- Phase ends with recommendations to amend the consortium, the workplan and/or the budget
- List of proposals funded



Evaluation criteria applicable to Collaborative project proposals (IP or STREP)

<p align="center">S/T QUALITY</p> <p align="center">"Scientific and/or technological excellence"</p> <p align="center">(relevant to the topics addressed by the call)</p>	<p align="center">IMPLEMENTATION</p> <p align="center">"Quality and efficiency of the implementation and the management"</p>	<p align="center">IMPACT</p> <p align="center">"Potential impact through the development, dissemination and use of project results"</p>
<ul style="list-style-type: none"> • Soundness of concept, and quality of objectives • Progress beyond the state-of-the-art • Quality and effectiveness of the S/T methodology and associated work plan 	<ul style="list-style-type: none"> • Appropriateness of the management structure and procedures • Quality and relevant experience of the individual participants • Quality of the consortium as a whole (including complementarity, balance) • Appropriateness of the allocation and justification of the resources to be committed (budget, staff, equipment) 	<ul style="list-style-type: none"> • Contribution, at the European and/or international level, to the expected impacts listed in the work programme under relevant topic/activity • Appropriateness of measures for the dissemination and/or exploitation of project results, and management of intellectual property.

Evaluation criteria applicable to Co-ordination & Support Actions proposals (CA or SA)

<p style="text-align: center;">S/T QUALITY</p> <p style="text-align: center;">"Scientific and/or technological excellence"</p> <p style="text-align: center;">(relevant to the topics addressed by the call)</p>	<p style="text-align: center;">IMPLEMENTATION</p> <p style="text-align: center;">"Quality and efficiency of the implementation and the management"</p>	<p style="text-align: center;">IMPACT</p> <p style="text-align: center;">"Potential impact through the development, dissemination and use of project results"</p>
<p>CA</p> <ul style="list-style-type: none"> • Contribution to the co-ordination of high quality research • Quality and effectiveness of the co-ordination mechanisms, and associated work plan <p>SA</p> <ul style="list-style-type: none"> • Quality and effectiveness of the support action mechanisms, and associated work plan 	<ul style="list-style-type: none"> • Quality of the consortium as a whole (including complementarity, balance) [for SA: only if relevant] • Appropriateness of the allocation and justification of the resources to be committed 	<ul style="list-style-type: none"> • Appropriateness of measures for spreading excellence, exploiting results, and dissemination knowledge, through engagement with stakeholders, and the public at large.

Example of Evaluation

Project idea No	Conformity	WP (challenge, Objective)	ORIGINALITY (scientific criteria)	FEASIBILITY (implementation criteria)	IMPACT (impact criteria)	Comments
1	NON (0)	Non				Study survey
2	YES	3.1	YES 4	YES 4	4	
3	NOT IT		0			Could be submitted in HEALTH
4	NOT IT		0			Could be submitted in HEALTH